

OVERVIEW

As you build your Humminbird® network, it is important to keep your control head and accessories software up to date. Accessories such as i-Pilot® Link™, 360 Imaging™, SM1000/2000/3000, and Ethernet Switches are updated through the ONIX™ and ION™ control heads.

Preparation: We recommend that you read this guide completely before starting any software updates. Control heads take approximately 10 minutes to update, and each control head on the network must be updated individually. Accessories take approximately 3 minutes to update.

Supplies: In addition to your Humminbird equipment, you will need a PC with Internet access and a blank SD card. If you have an ION, you can use a USB stick for the instructions in this guide.

Customer Service: If you have questions about the software update process, contact Humminbird Customer Service by visiting our Web site at humminbird.com or by calling **1-800-633-1468**.

1 | Register Products and Back up Data

Before the control head software is updated or restored to system defaults, export your menu settings, radar settings, and navigation data, and copy your screen snapshots to an SD card.

⚠ WARNING! Humminbird is not responsible for the loss of data files [waypoints, routes, tracks, groups, snapshots, recordings, etc.] that may occur due to direct or indirect damage to the unit's hardware or software. It is important to back up your control head's data files periodically. Data files should also be saved to your PC before restoring the unit's defaults or updating the software.

Register your Humminbird Products

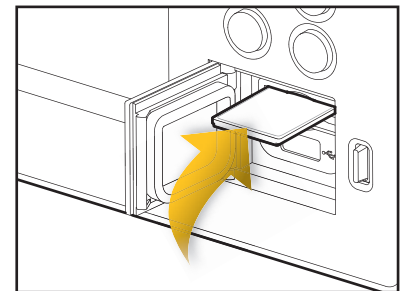
Set up an online account and register your Humminbird equipment so that you will receive the latest Humminbird news, including accessory compatibility and software update information.

1. Go to our Web site at humminbird.com. Select Support > Register your Product.
If you already have a humminbird.com account, select My Humminbird.
2. Follow the on-screen prompts to create a new account and register your products.

Export Data and Menu Settings

It is important to back up your control head data files and menu settings. Use the instructions in this section before you restore the control head defaults or update software.

1. Install the SD card into the control head card slot.
2. Press the HOME key.
3. Select the Files tool.
4. Under Export, select Nav Data.
5. Follow the on-screen prompts.
6. **Select a Save Location:** Save to the SD Card [top slot = SD Card 1, bottom slot = SD Card 2].
7. Repeat steps 4 and 5 to export Menu Settings and Radar Installation settings [if applicable to your installation].
8. Repeat the steps in this section on each control head.



Insert the SD card with the label facing up.

📄 NOTE: If you want to use the data files and menu settings on your control head after it has been updated, you can import them from the Files tool.

Copy Internal Images

If you have screen snapshots saved to the control head, use the following instructions to copy them to an SD card.

1. Install the SD card into the control head card slot.
2. Press the HOME key.
3. Select the Images tool.
4. Under Source, select Internal.
5. Press and hold one of the screen snapshots.

OR

Use the joystick to select a screen snapshot. Press the MENU key.

6. Select Copy All.
7. **Select a Save Location:** Save to the SD Card [top slot = SD Card 1, bottom slot = SD Card 2].
8. Repeat the steps in this section on each control head.

2 | Check the Current Software Version

It is helpful to review the software version number that is currently installed on the control head and each accessory.

1. Press the HOME key.
2. Select Setting > Network > Network Info.
3. The Network Info dialog box shows a section for each device connected to the network. Scroll to each section to note the software version number listed.

3 | Download Software Updates

1. Install the SD card into the PC card slot.
2. Go to humminbird.com, and select My Humminbird to sign in to your account.
3. Select the My Equipment tab. The available software updates are listed as **Downloads** under each registered product.
 - Under Downloads, click the file name.
 - Read the instructions in the dialog box and select Download.
 - Follow the on-screen prompts to save the software file to the SD card.
4. Repeat step 3 to download the software updates posted to each registered product.

4 | Update Control Head Software

When you install the SD card with the software file, the control head will detect the update and provide an automatic prompt to install the software. You can follow the prompts or choose to install the software at a later time through the Files tool. It is important to review the following tips:

- **Automatic Restart:** The control head will restart during the software update process.
- **Multiple Control Heads:** If you have more than one control head on the network, go to each control head to install the latest software update. Control Head software updates cannot be updated through another networked unit.

ONIX AND ION SOFTWARE UPDATE GUIDE

532261-1_A

⚠ WARNING! Before the control head software is updated or restored to system defaults, export your menu settings, radar settings, and navigation data. Copy your screen snapshots to an SD card. See **Register Products and Back up Data** for details.

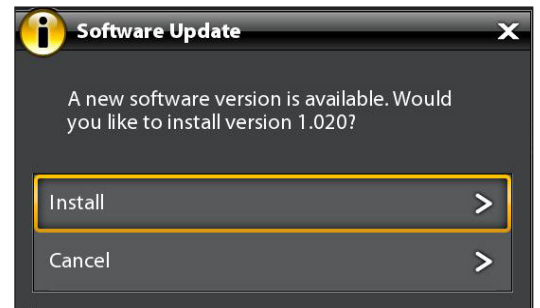
Update Software Automatically

1. Press the POWER key. Follow the on-screen prompts to start normal mode on the control head.
2. Install the SD card with the software file[s] into the control head card slot.
3. A dialog box will display to start the software update.

To start the control head software update, select Install. When SUCCESS is displayed, the software update is finished. If you have accessories to update, proceed to **Update Accessories**. If you don't have any other software updates to install, power off the control head, and restart it.

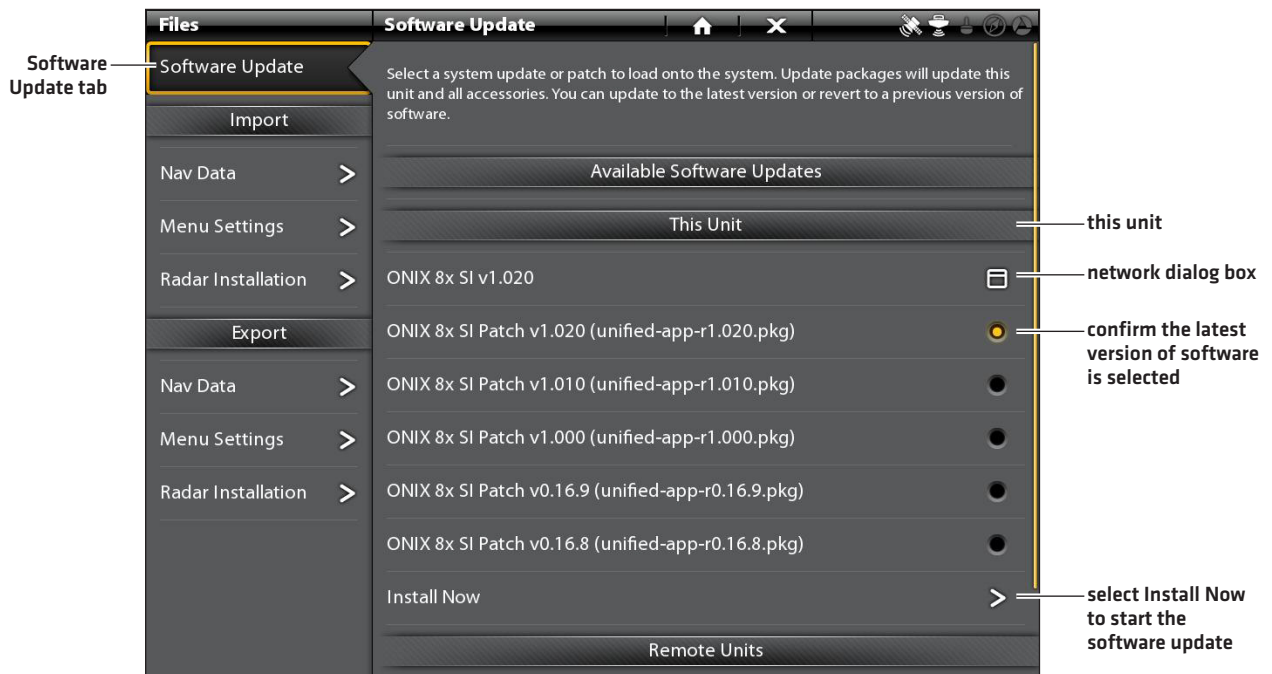
OR

To update the software at a later time from the Files tool, select Cancel. If you select Cancel, see **Update Software from the Files Tool** in this section.



Update Software from the Files Tool

1. Install the SD card with the software file[s] into the control head card slot.
2. Press the HOME key.
3. Select the Files tool.
4. From the Software Update tab, scroll to This Unit.
5. Confirm that the most current version of software is selected from the list. Select Install Now.



6. When SUCCESS is displayed, the software update is finished. If you have accessories to update, proceed to **Update Accessories**. If you don't have any other software updates to install, power off the control head, and restart it.

5 | Update Accessories

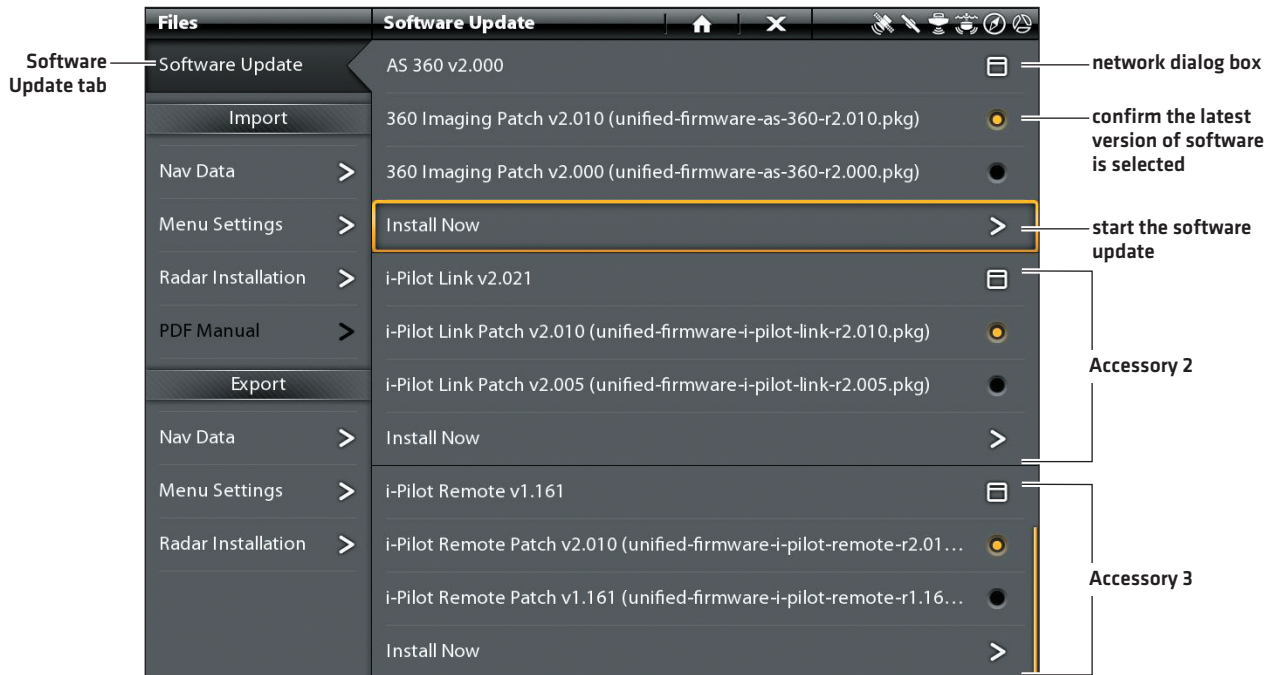
Accessory software is updated from the Files tool, and the process is similar to updating the control head software. It is important to review the following tips:

- Update the control head and accessories in the order they appear on the software update list in the Files Tool. **Sonar Black Boxes (SM1000/2000/3000)** and **Ethernet Switches** must be updated individually on the software update list.
- If an accessory is not displayed on the list, confirm it is detected on the network [Settings > Network > Network Info]. Also, confirm the cable connections are secure.
- You might notice that the control head will restart during the software update. This is part of the update process.
- The **i-Pilot Link** has separate software updates for the controller and remote. After the software is updated on the control head, you must go to the remote and initiate the download of the remote software to the remote itself. See your i-Pilot Link manual for details.

⚠ WARNING! Before the control head software is updated or restored to system defaults, export your menu settings, radar settings, and navigation data. Copy your screen snapshots to an SD card. See **Register Products and Back up Data** for details.

Update Accessories from the Files Tool

1. Install the SD card with the software file[s] into the control head card slot.
2. Press the HOME key. Select the Files tool.
3. From the Software Update tab, scroll to the first accessory in the list.
4. Confirm that the most current version of software is selected from the list. Select Install Now.



5. When the software update is finished, scroll to the next accessory update in the list (if applicable), and repeat step 4.
6. **Entire System Restart:** After all software has been updated, power off all control heads and connected equipment. Wait 10 seconds, and then power on all equipment.